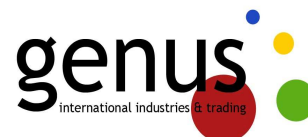


**Inspection report in origin**

**Invoice number : 20100114**

**Inspection dates : 3rd and 12th May of 2015**



**INSPECTION REPORT IN ORIGIN**

1

**Client:**

XXXXXX

XXXXX

XXXXXX

XXXXXXXXXXXX

**Carried out on:**

**May 2015**

**R.P. CHINA**

This inspection has been performed to the best of our knowledge and impartiality being our responsibility limited by the accomplishment of the received instruction. This certificate does not exonerate the involve parties of any of their contractual obligations

---

**GENUS INTERNATIONAL INDUSTRIES & TRADING**

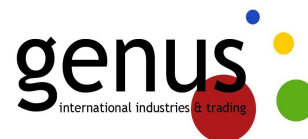
**10A Seapower Industrial Centre, 177 Hoi Bun Road, Kwun Tong, Kowloon, HONG KONG**

---

## Inspection report in origin

Invoice number : 20100114

Inspection dates : 3rd and 12th May of 2015



The undersigned **David Ruan** in name of **Genus International Industries & Trading LTD.** hereby certifies:

2

That by request of Fandis S.p.A. has inspected and loaded 1 container of 20 feet, on the 3rd and 12th of May, 2015 with the following results.

### 1. Inspection general information

#### 1.1 Inspection purpose

	Container 1	
Weather	Sunny	
Truck's arrival time	11:05a.m	
Load beginning time	11:25a.m	
Truck's departure time	13:30p.m	
Truck's number	A79361 (cab) 79361 (trailer)	
Container serial number	MEDU3231433	
Container size	20'	
Container condition	Interior:	Satisfactory
	Exterior:	Satisfactory

#### 1.2 Inspection place and load certification:

Mosquito screen mesh provider's factory (R.P. CHINA)

---

GENUS INTERNATIONAL INDUSTRIES & TRADING

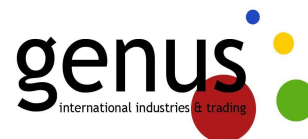
10A Seapower Industrial Centre, 177 Hoi Bun Road, Kwun Tong, Kowloon, HONG KONG

---

## Inspection report in origin

Invoice number : 20100114

Inspection dates : 3rd and 12th May of 2015



1.3 Invoice N°: 20100114

1.4 Exporter:

GENUS INTERNATIONAL INDUSTRIES & TRADING  
10A Seapower Industrial Centre, 177 Hoi Bun Road, Kwun Tong, Kowloon,  
HONG KONG

1.5 Importer:

xxxx (IN NAME OF XXXXXX)

1.6 Merchandize and packaging:

Container : MEDU3231433

Product	Roll Measure	Total cartons	Total SQM
Rigid mesh 18x16 gray	1,5x100 m	60	9000
Rigid mesh 18x16 gray	1,8x100m	190	34200
Rigid mesh 18x16 gray	2,4x100m	90	21600
Rigid mesh 18x16 gray	1,8x30m	20	1080
Total		360	65880

GENUS INTERNATIONAL INDUSTRIES & TRADING

10A Seapower Industrial Centre, 177 Hoi Bun Road, Kwun Tong, Kowloon, HONG KONG

## Inspection report in origin

Invoice number : 20100114

Inspection dates : 3rd and 12th May of 2015



## 2 INSPECTION RESULTS:

4

2.1 Merchandise loaded regarding the customer's order.

Product	Roll Measure	Total cartons	Costumer Order	Difference
Rigid mesh 18x16 gray	1,5x100 m	60	60	0
Rigid mesh 18x16 gray	1,8x100m	190	190	0
Rigid mesh 18x16 gray	2,4x100m	90	90	0
Rigid mesh 18x16 gray	1,8x30m	20	40	-20

2.2 All the packs were checked at the warehouse and during the loading procedure by the acting inspector coinciding exactly with the Packing List which document is attached at this Inspection Report and it's a part of this one

2.4 All the packs were marked with the necessary information for its identification as the model, the quantity of pieces, the color, CE mark ...etc

2.5 Before the container loading it was carried out the appreciation of its technical condition with the purpose to check its airtightness , stability and corrosion noticing a good condition of the container at first sight

2.6 The load of the containers was realized in a compact and uniform way, achieving a utilization of approximately 95 % of the available capacity, attending to the number and type of packs. At the conclusion of the loading procedure the truck driver proceeded to the sealed of the container under the supervision of the acting inspector.

---

GENUS INTERNATIONAL INDUSTRIES & TRADING

10A Seapower Industrial Centre, 177 Hoi Bun Road, Kwun Tong, Kowloon, HONG KONG

---

## Inspection report in origin

Invoice number : 20100114

Inspection dates : 3rd and 12th May of 2015



### 3 INSPECTION NOTES

5

3.1 The mesh total rolls was checked according the packing list. All 100m rolls have been loaded, but 20 of the 20 30m rolls have not been loaded in the container because it was full and there was no more space.

3.2 Length of rolls has been sampled and checked being ok: rolls of 100m contain around 101m and rolls of 30m contain around 30,5m

3.3 Width of the mesh has also been checked, being a little more than it was supposed to be (around -0 cm / +1 cm), but considered acceptable

3.4 We checked that the mesh was 18x16 thread/inch<sup>2</sup> (7x7,7 thread/cm<sup>2</sup>)

3.5 The mesh thickness was checked being this correct. The mesh is 0.3mm-+ 0.03mm thick.

3.6 We checked that the mesh was manufactured correctly. It has 18x16 threads/inch<sup>2</sup>.

3.7 We checked the color of mesh being this grey, uniform without any lines, manufacturing errors, or changes in the thread thickness.

3.8 We checked the welded wire grid thread, being very good.

3.9 We checked the material of the mesh, being composed of fiberglass and recovered with PVC.

3.10 The mesh has regular squared holes and looks uniform.

3.11 We burned a piece of mesh to check if the material was self-extinguishing, being ok.

3.12 All the rolls are plasticized (both 30m and 100m rolls) in transparent plastic with any name printed on it.

3.13 30m rolls are in squared individual clipboard boxes

3.14 100m rolls are in rounded individual clipboard boxes

---

GENUS INTERNATIONAL INDUSTRIES & TRADING

10A Seapower Industrial Centre, 177 Hoi Bun Road, Kwun Tong, Kowloon, HONG KONG

---

## Inspection report in origin

Invoice number : 20100114

Inspection dates : 3rd and 12th May of 2015



3.15 Any Chinese name or character is written on any box.

3.16 All the boxes are marked with labels, including length, width, color and CE mark.

6

## 4 ATTACHEMENTS

4.1 Photographic testimony

4.2 Packing List

4.3 Invoice

Hong Kong 13th of May 2015

DAVID RUAN

Inspector

---

GENUS INTERNATIONAL INDUSTRIES & TRADING

10A Seapower Industrial Centre, 177 Hoi Bun Road, Kwun Tong, Kowloon, HONG KONG

---

**Inspection report in origin**

**Invoice number : 20100114**

**Inspection dates : 3rd and 12th May of 2015**



7

## **PHOTOGRAPHIC TESTIMONY**

---

**GENUS INTERNATIONAL INDUSTRIES & TRADING**

**10A Seapower Industrial Centre, 177 Hoi Bun Road, Kwun Tong, Kowloon, HONG KONG**

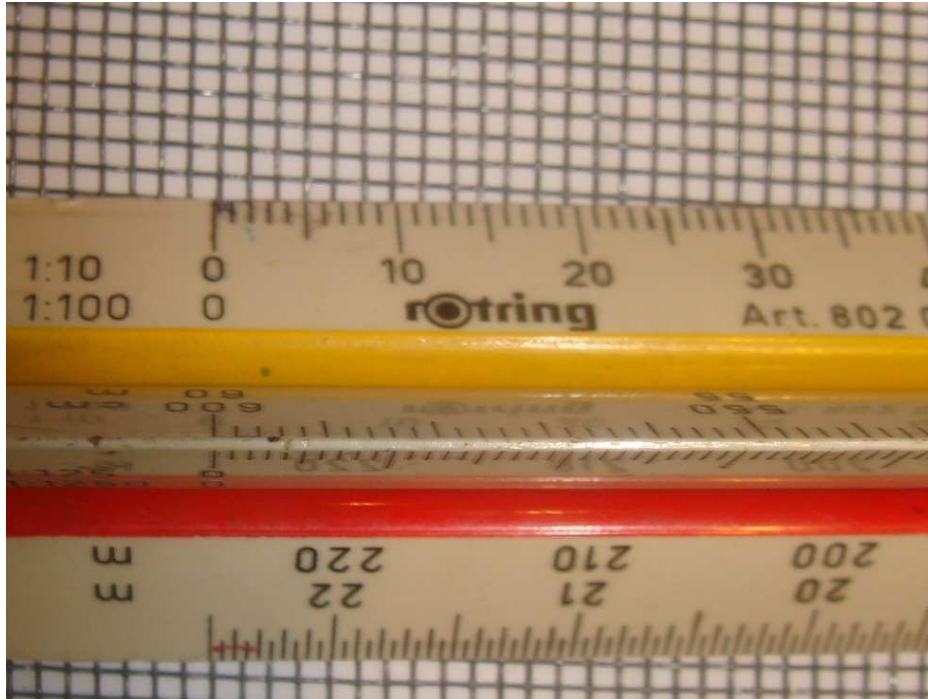
---

## Inspection report in origin

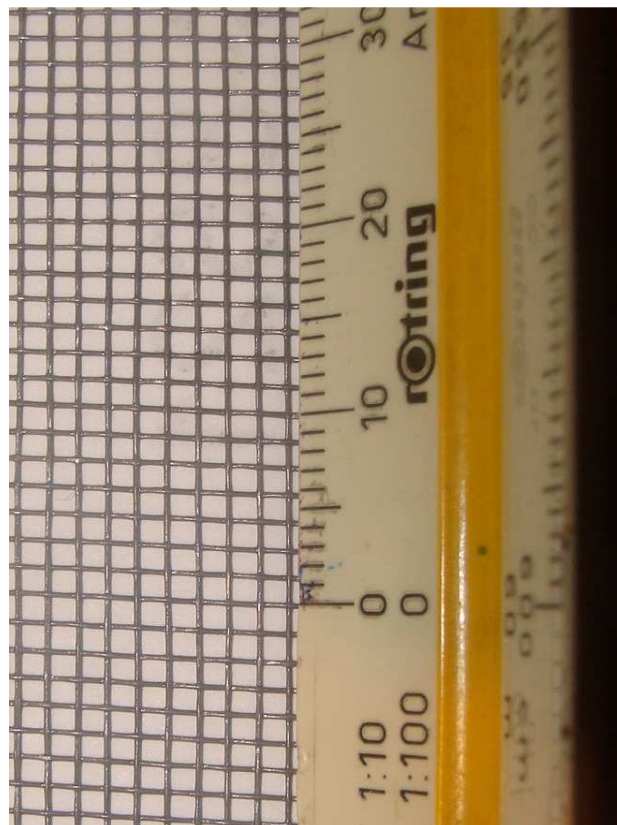
Invoice number : 20100114

Inspection dates : 3rd and 12th May of 2015

### 1. Vertical mesh warp



### 2. Horizontal mesh warp





## Inspection report in origin

Invoice number : 20100114

Inspection dates : 3rd and 12th May of 2015

### 3. Mesh width checking



### 4. Mesh length checking (100m rolls)





## Inspection report in origin

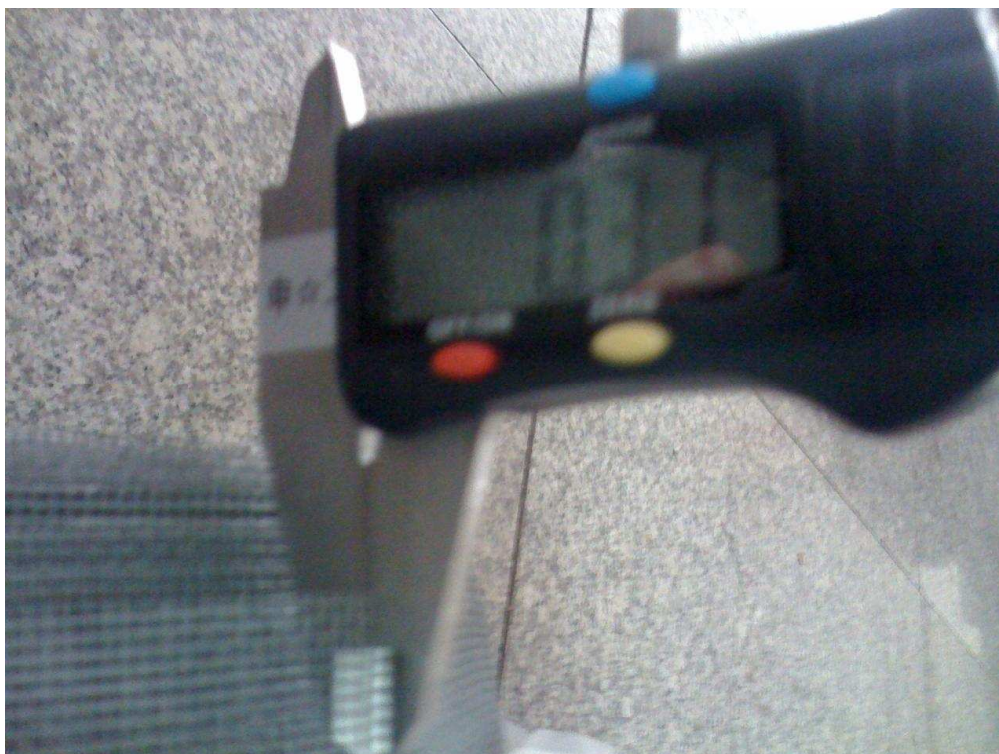
Invoice number : 20100114

Inspection dates : 3rd and 12th May of 2015

### 5. Mesh length checking (30m rolls)



### 6. Mesh thickness checking



## Inspection report in origin

Invoice number : 20100114

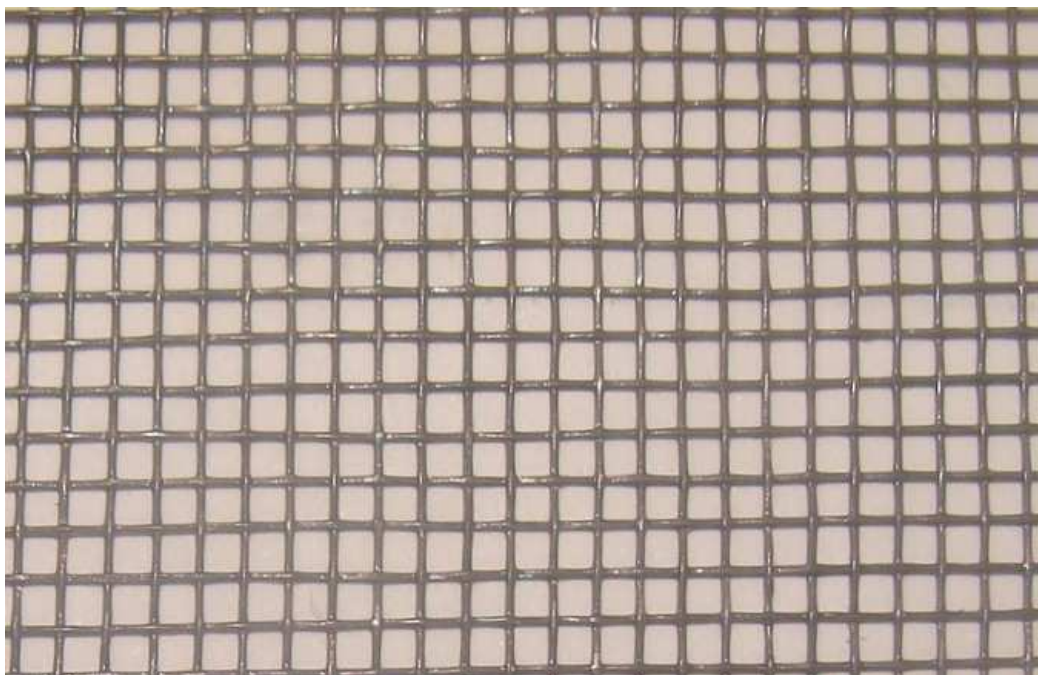
Inspection dates : 3rd and 12th May of 2015

### 7. Mesh burning test

11



### 8. Welded wire grid thread detail



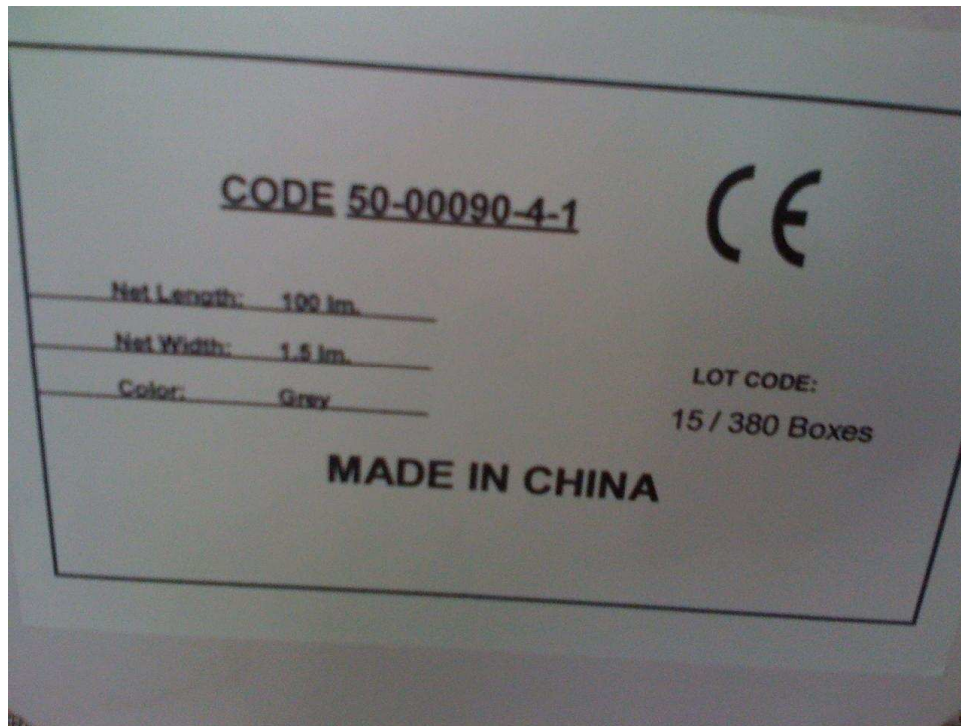


## Inspection report in origin

Invoice number : 20100114

Inspection dates : 3rd and 12th May of 2015

### 9. Box Labels



### 10. 30m mesh at warehouse before packing



---

GENUS INTERNATIONAL INDUSTRIES & TRADING

10A Seapower Industrial Centre, 177 Hoi Bun Road, Kwun Tong, Kowloon, HONG KONG

---

## Inspection report in origin

Invoice number : 20100114

Inspection dates : 3rd and 12th May of 2015

### 11. Packed 30 m rolls



### 12. Plasticised of 100m rolls inside the tube





## Inspection report in origin

Invoice number : 20100114

Inspection dates : 3rd and 12th May of 2015



### 13. Packed 100m rolls



14

### 14. Empty container inspection



---

GENUS INTERNATIONAL INDUSTRIES & TRADING

10A Seapower Industrial Centre, 177 Hoi Bun Road, Kwun Tong, Kowloon, HONG KONG

---

**Inspection report in origin**

**Invoice number : 20100114**

**Inspection dates : 3rd and 12th May of 2015**

**15. Track front number**

15



**16. Trailer number**





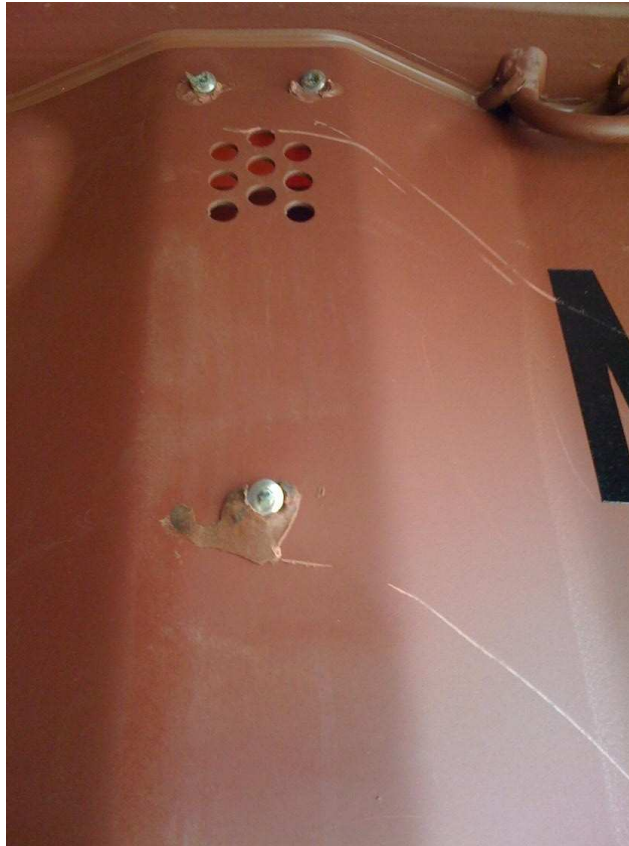
**Inspection report in origin**

**Invoice number : 20100114**

**Inspection dates : 3rd and 12th May of 2015**

16

**17. Internal container Ventilation**



**18. External ventilation cover**

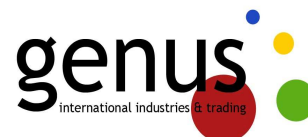




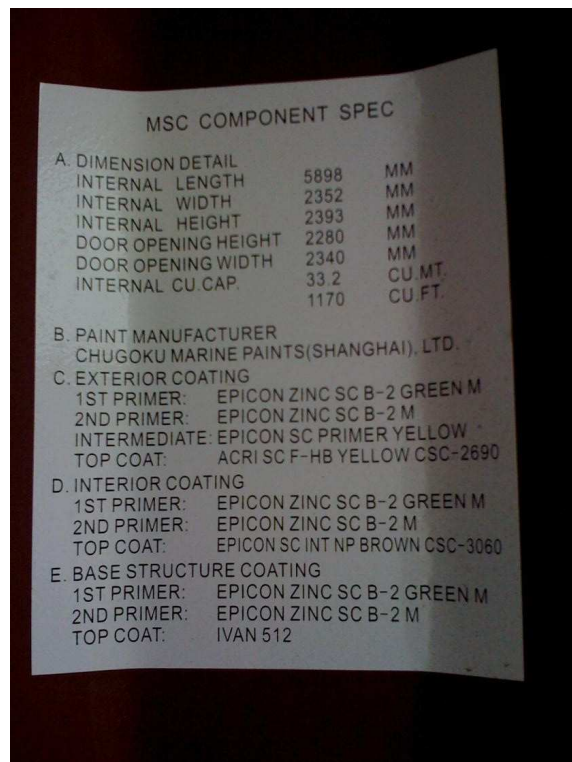
## Inspection report in origin

Invoice number : 20100114

Inspection dates : 3rd and 12th May of 2015



### 19. Container specifications

A photograph of a white paper sheet titled "MSC COMPONENT SPEC" with technical specifications for a container. The sheet is placed on a dark surface. A red circle with the number "17" is visible on the left side of the page.

MSC COMPONENT SPEC		
A. DIMENSION DETAIL		
INTERNAL LENGTH	5898	MM
INTERNAL WIDTH	2352	MM
INTERNAL HEIGHT	2393	MM
DOOR OPENING HEIGHT	2280	MM
DOOR OPENING WIDTH	2340	MM
INTERNAL CU. CAP.	33.2	CU. MT.
	1170	CU. FT.
B. PAINT MANUFACTURER		
CHUGOKU MARINE PAINTS(SHANGHAI), LTD.		
C. EXTERIOR COATING		
1ST PRIMER:	EPICON ZINC SC B-2 GREEN M	
2ND PRIMER:	EPICON ZINC SC B-2 M	
INTERMEDIATE:	EPICON SC PRIMER YELLOW	
TOP COAT:	ACRI SC F-HB YELLOW CSC-2690	
D. INTERIOR COATING		
1ST PRIMER:	EPICON ZINC SC B-2 GREEN M	
2ND PRIMER:	EPICON ZINC SC B-2 M	
TOP COAT:	EPICON SC INT NP BROWN CSC-3060	
E. BASE STRUCTURE COATING		
1ST PRIMER:	EPICON ZINC SC B-2 GREEN M	
2ND PRIMER:	EPICON ZINC SC B-2 M	
TOP COAT:	IVAN 512	

### 20. Container number



GENUS INTERNATIONAL INDUSTRIES & TRADING

10A Seapower Industrial Centre, 177 Hoi Bun Road, Kwun Tong, Kowloon, HONG KONG

## Inspection report in origin

Invoice number : 20100114

Inspection dates : 3rd and 12th May of 2015



### 21. Rolls ready to be loaded



### 22. Starting the loading



---

GENUS INTERNATIONAL INDUSTRIES & TRADING

10A Seapower Industrial Centre, 177 Hoi Bun Road, Kwun Tong, Kowloon, HONG KONG

---



## Inspection report in origin

Invoice number : 20100114

Inspection dates : 3rd and 12th May of 2015



### 23. Loading process

19



### 24. Loading process



---

GENUS INTERNATIONAL INDUSTRIES & TRADING

10A Seapower Industrial Centre, 177 Hoi Bun Road, Kwun Tong, Kowloon, HONG KONG

---

## Inspection report in origin

Invoice number : 20100114

Inspection dates : 3rd and 12th May of 2015



### 25. Loading Process



### 26. Loading process



---

GENUS INTERNATIONAL INDUSTRIES & TRADING

10A Seapower Industrial Centre, 177 Hoi Bun Road, Kwun Tong, Kowloon, HONG KONG

---

## Inspection report in origin

Invoice number : 20100114

Inspection dates : 3rd and 12th May of 2015



### 27. First door closing



### 28. All loaded



GENUS INTERNATIONAL INDUSTRIES & TRADING

10A Seapower Industrial Centre, 177 Hoi Bun Road, Kwun Tong, Kowloon, HONG KONG



## Inspection report in origin

Invoice number : 20100114

Inspection dates : 3rd and 12th May of 2015

22

### 29. Second door closed



### 30. Closed doors and security seal



GENUS INTERNATIONAL INDUSTRIES & TRADING

10A Seapower Industrial Centre, 177 Hoi Bun Road, Kwun Tong, Kowloon, HONG KONG

**Inspection report in origin**

**Invoice number : 20100114**

**Inspection dates : 3rd and 12th May of 2015**

**31. Security seal**

23



**Inspection report in origin**

**Invoice number : 20100114**

**Inspection dates : 3rd and 12th May of 2015**



## INVOICE

24

## PACKING LIST

---

GENUS INTERNATIONAL INDUSTRIES & TRADING

10A Seapower Industrial Centre, 177 Hoi Bun Road, Kwun Tong, Kowloon, HONG KONG

---